

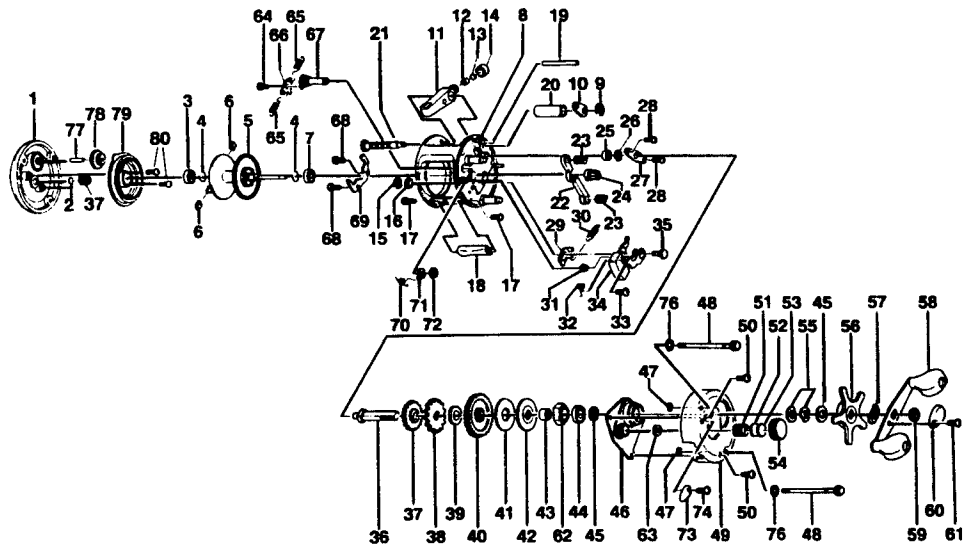
# **BROWNING® MIDAS 6SW**

## **SPECIFICATIONS:**

200 yds./20 lb. Line Capacity  
 5.2:1 Gear Ratio  
 11.3 oz. Weight  
 Righthand, Superwide  
 5 BB; 1 RB

## **FEATURES:**

One-piece die-cast aluminum frame  
 Constant anti-reverse  
 Thumb button & soft touch paddle handle  
 Variable centrifugal brake system  
 Color - Gold



Key No.	Part No.	Description	Price	Key No.	Part No.	Description	Price
1	FV323-03	Left Side Cover Assy	15.55	41	JX059-01	Drag Disc	1.44
2	XX038-02	Spool Shaft Washer	.26	42	JX045-01	Drag "D" Washer	.81
3	JX106-01	Bearing - Spool Shaft	6.33	43	ZW052-01	Sleeve - One Way Bearing	2.81
4	JX080-01	Clip Ring	.26	44	TW058-01	Bearing - Crank Shaft (U)	7.21
5	FV321-01	Spool Assy	14.75	45	JX038-01	Crank Shaft Washer	.31
6	XX044-01	Brake Shoe B	.26	46	JX066-02	Crank Shaft Guide	3.31
7	JX106-01	Bearing - Spool Shaft	6.33	47	JX073-01	O-Ring - Thumb Screw	.31
8	FV301-03	Frame Assy	36.20	48	XX374-03	Thumb Screw Assy	1.21
9	QW120-01	E-Clip - Worm Shaft	.26	49	XX024-08	Right Side Cover	10.31
10	JX067-01	Bushing - Worm Shaft	.31	50	QW123-05	Right Side Cover Screw	.21
11	JX347-02	Line Guide Carrier Assy	2.32	51	JX105-01	Spring - Tension Knob	.31
12	JX006-01	Line Guide Pawl	1.80	52	QW032-02	Washer - Spool Tension	.21
13	JX035-01	Washer - Line Guide Pawl	.26	53	JX082-01	Washer - Cushion	.21
14	JX007-02	Screw - Line Guide Carrier	.52	54	XX033-01	Spool Tension Knob	2.81
15	NX092-01	E-Clip - Kick Lever Guide Post	.30	55	JX046-01	Spring "D" Washer	.61
16	XX035-01	Washer - Kick Lever Guide	.26	56	XX355-02	Star Drag Assy	3.41
17	JX050-01	Screw - Thumb Rest	.31	57	NX054-01	Handle Washer	.21
18	FV009-02	Thumb Rest	.62	58	VW318-02	Handle Assy	11.61
19	FV061-01	Line Guide Carrier Guide	1.00	59	QW003-01	Handle Nut	.31
20	FV016-01	Worm Shaft Guide	.75	60	QW034-03	Handle Nut Cap	1.11
21	FV372-01	Worm Shaft Assy	7.45	61	QW123-05	Handle Nut Cap Screw	.21
22	JX025-01	Pinion Yoke	.52	62	ZW063-01	One Way Bearing	9.31
23	JX040-01	Yoke Spring	.21	63	XX117-01	Bearing - Tension Knob	5.51
24	JX011-01	Pinion Gear	5.36	64	XX125-01	Screw - Clicker Pawl	.91
25	XX017-01	Bearing - Crank Shaft (L)	5.20	65	JX110-01	Clicker Spring	.21
26	QW120-01	E-Clip - Crank Shaft	.26	66	JX114-01	Clicker Pawl	.71
27	JX002-01	Retainer - Crank Shaft	.57	67	JX084-01	Clicker Cam	2.81
28	JX107-01	Screw - Crank Shaft Retainer	.15	68	JX125-01	Screw - Clicker Spring Holder	.21
29	JX077-01	Kick Lever	.57	69	JX103-01	Clicker Spring Holder	1.21
30	JX097-01	Spring - Kick Lever	.15	70	JX022-01	Spring - Clicker Cam	.21
31	JX068-01	Bushing - Release Slider Guide	1.08	71	JX041-01	Click Cam Actuator	.31
32	JX104-01	Spring - Release Slider	.21	72	JX075-01	C-Clip	.21
33	XX050-01	Screw - Release Slider	.15	73	JX109-02	Click Lever	.51
34	JX339-02	Release Slider Assy	1.80	74	QW053-07	Screw - Click Lever	.71
35	JX102-01	Post - Kick Lever Guide	.88	76	JX121-01	Washer - Thumb Screw	.21
36	JX008-01	Crank Shaft	2.88	77	FV098-01	Idle Gear Post	.51
37	FV112-01	O/S Drive Gear	.50	78	FV127-01	O/S Idle Gear	1.01
38	JX083-01	Trip Ratchet	.93	79	FV351-01	Spool Cover Assy	6.61
39	QW111-01	Washer - Ratchet	.26	80	AV125-01	Spool Cover Screw	.71
40	JX012-01	Drive Gear	7.67				

<b>MODEL INTRODUCED</b>	1996	<b>EFFECTIVE DATE OF PARTS LIST/DIAGRAM</b>	Oct. 1996	<b>DISCONTINUED</b>	N/A
-------------------------	------	---	-----------	---------------------	-----

Prices subject to change without notice. Prices do not include postage and handling.

PLEASE ORDER BY PART NUMBER

